



Click drawing to edit

45905

45927

45929

45890

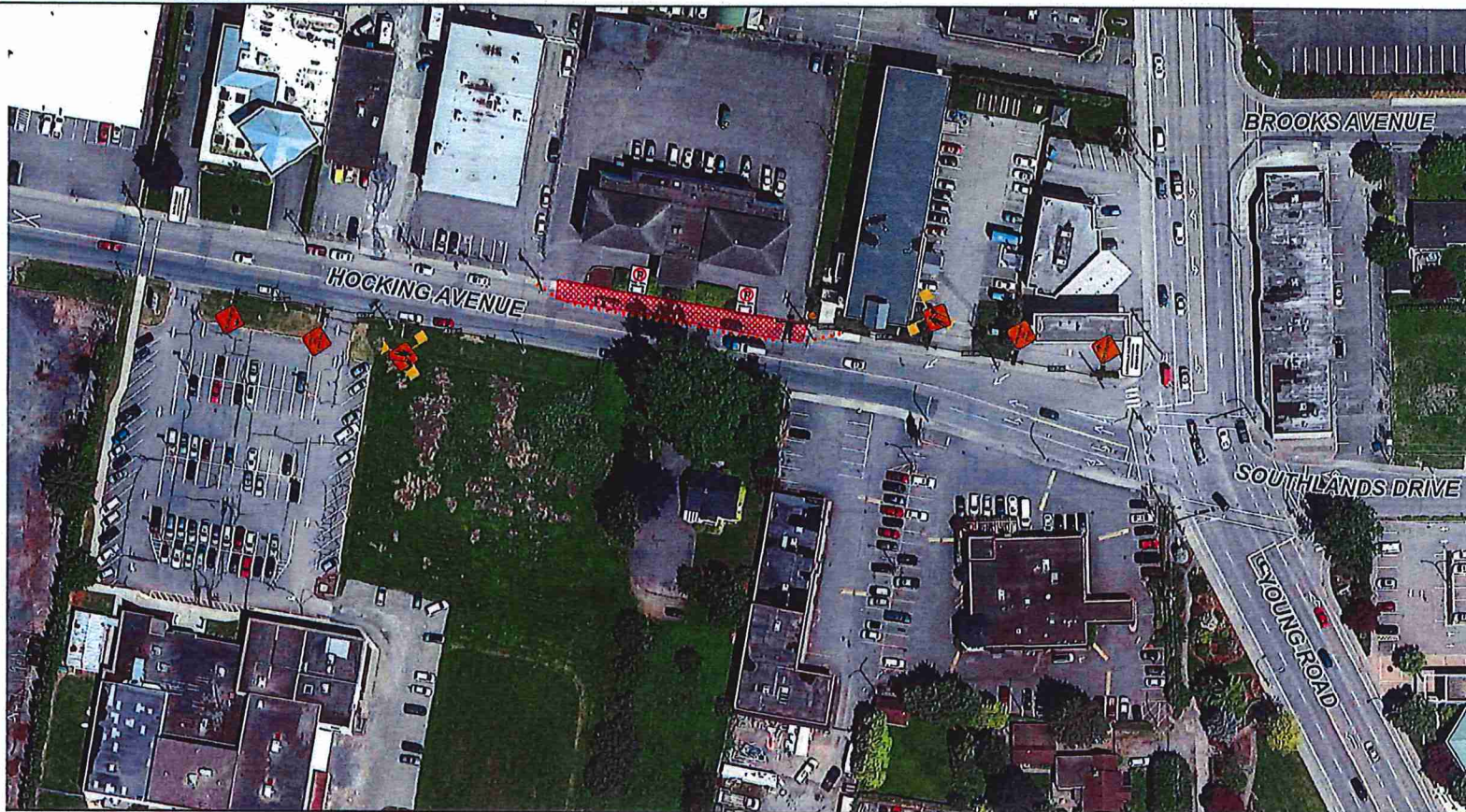
45910

45928

8559

45844

HOCKING AVENUE



LEGEND

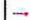





-  Direction of Travel
-  Sign
-  North Arrow
-  Tubular marker
-  Certified TCP
-  HLWD

Figure # 7.5 in the TCMWR 2015 Edition
Work on Shoulder

This Traffic Control Plan is designed to accommodate
the installation of a water valve and replace curb & Sidewalk.

Work to commence Tuesday, October 22nd, 2019 with
completion expected November 22nd, 2019

Work hours shall be from 7:00 am - 5:00 pm



Drawing
NTS

Drawing No.
EE-Hocking Ave-01

All signs and traffic devices shall be
placed in compliance with WCB and the TCMWR